

# LDA vs. LAW : AWOS Scheduler

Filip Migom  
Product & Development Manager GLIMS

10 November 2014

# IHE-LTW + LDA/LAW

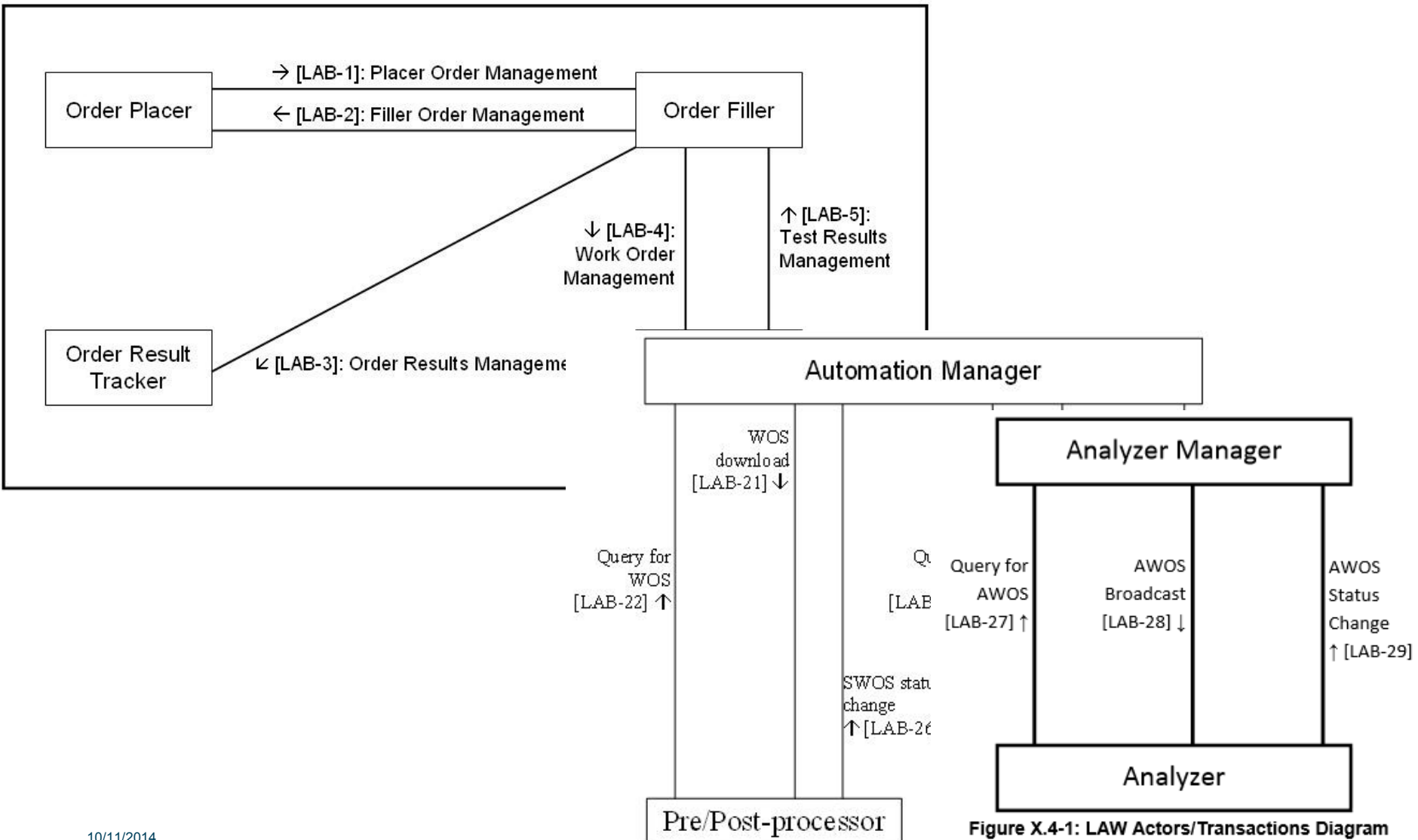
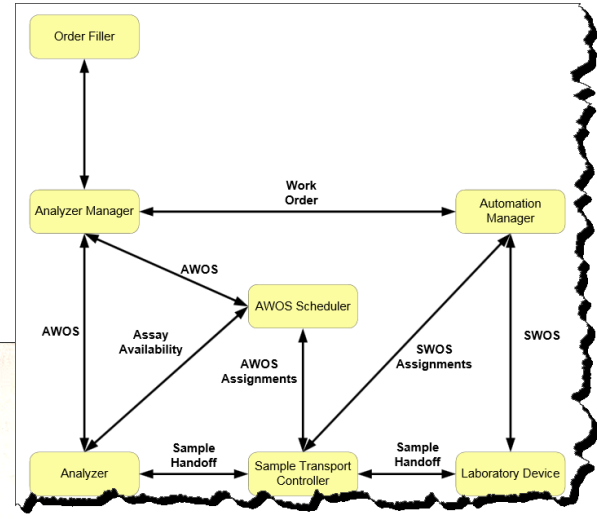
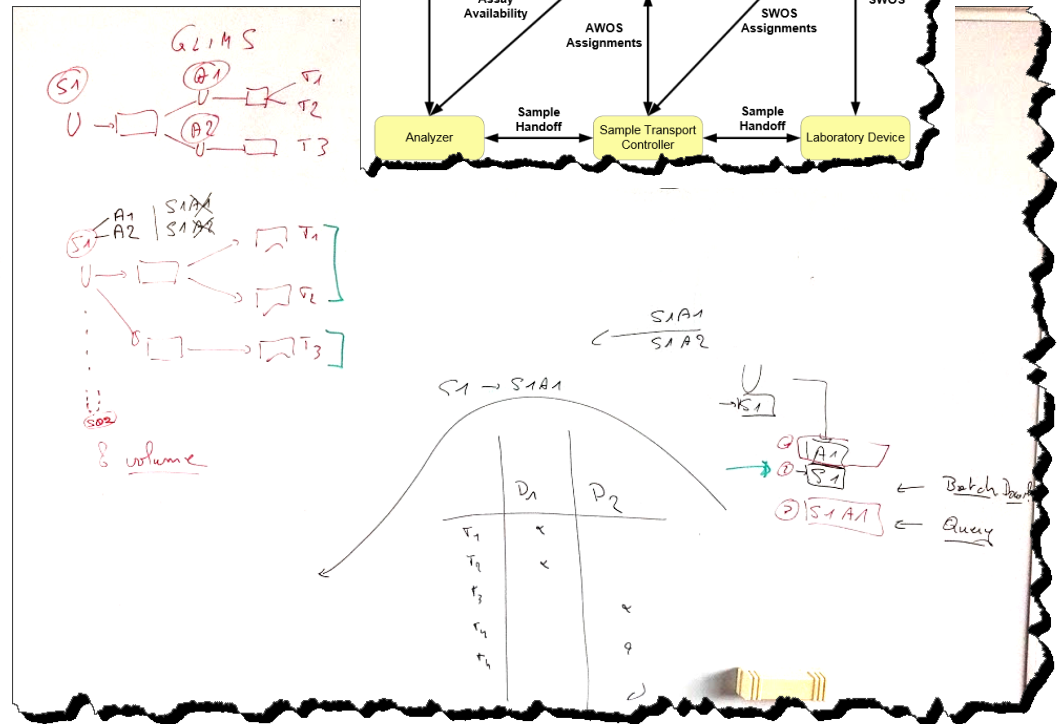
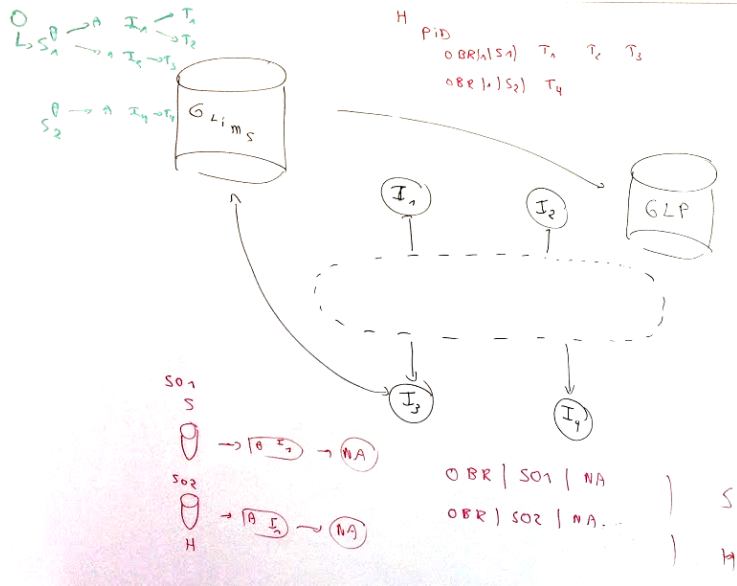


Figure X.4-1: LAW Actors/Transactions Diagram

# Specimen + Material communication



# Features for Analyzer Manager ?

**GLIMS**

Channel STATUS

Triggers: QC - Channel for block/unblock

Dev. multi! STATION { Block/unblock } Event! Dev. multi -

Dev. multi! ASSESSMENTS Method block/unblock

Procedure Input Material

? Reagent Usage

Dev. Risk V.9.5

STATION ERROR-Code

Triggers: Reagent? ? use of station flag + Station Security

Multiple Tests - Reagent Unblock Block

One Link/Link

OBR ..... Dev. multi!

OBR.12 = UN Block

2015

Jan Feb Mar Apr May Jun Jul Aug Sep Oct Nov Dec

Free Analysis Dev. multi! 9.5.1

**GLP**

Dev. multi! STATION TEST Block

UN Block

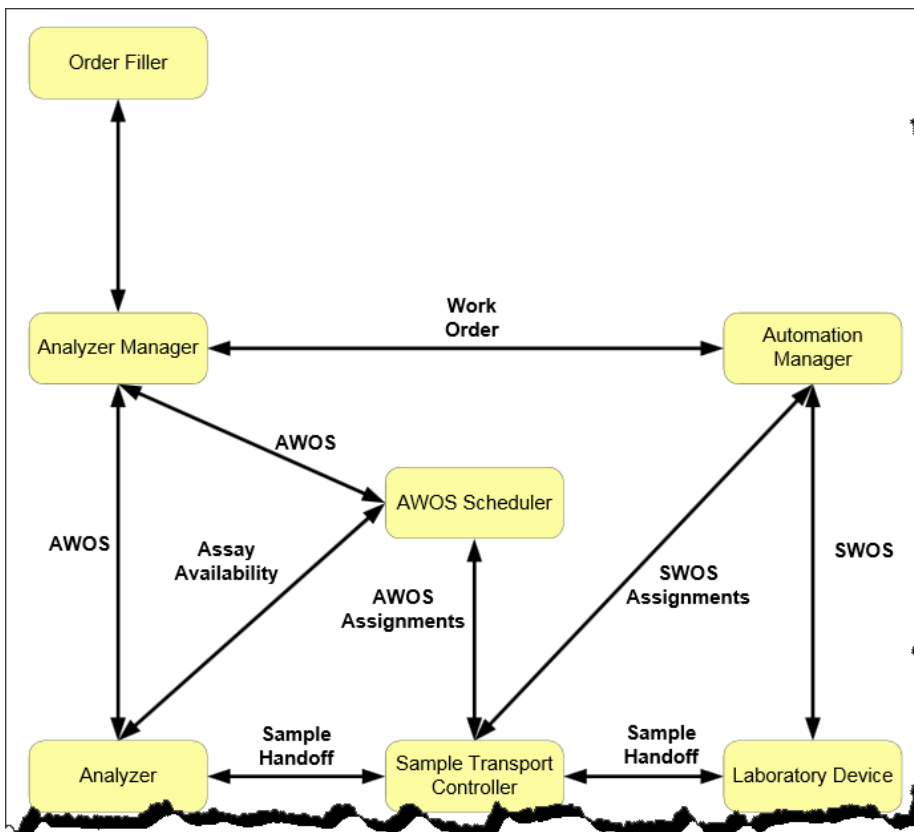
```

graph TD
    OF[Order Filler] <--> AM[Analyzer Manager]
    AM <--> AWOS[AWOS Scheduler]
    AWOS <--> AM
    AWOS <--> ATC[Sample Transport Controller]
    ATC <--> AM
    ATC <--> LD[Laboratory Device]
    LD <--> AM
    AM <--> AWOS
    AM <--> ATC
    AM <--> LD
    AM <--> AWOS
    
```

The flowchart illustrates the system architecture. At the top is the Order Filler, which sends Work Orders to the Analyzer Manager. The Analyzer Manager is connected to the AWOS Scheduler via Assay Availability and AWOS Assignments. The AWOS Scheduler sends AWOS Assignments to the Sample Transport Controller. The Sample Transport Controller handles Sample Handoff between the Analyzer and the Laboratory Device. The Laboratory Device also sends Sample Handoff to the Sample Transport Controller. The Analyzer Manager also receives Sample Handoff from the Analyzer and sends Sample Handoff to the Laboratory Device. The Laboratory Device sends SWOS Assignments to the Analyzer Manager.

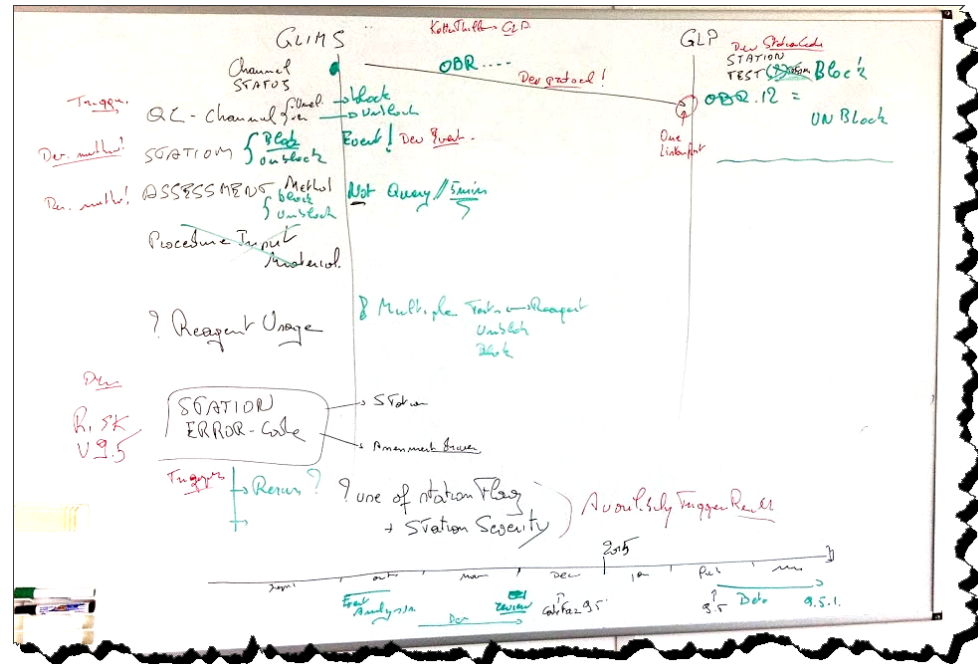
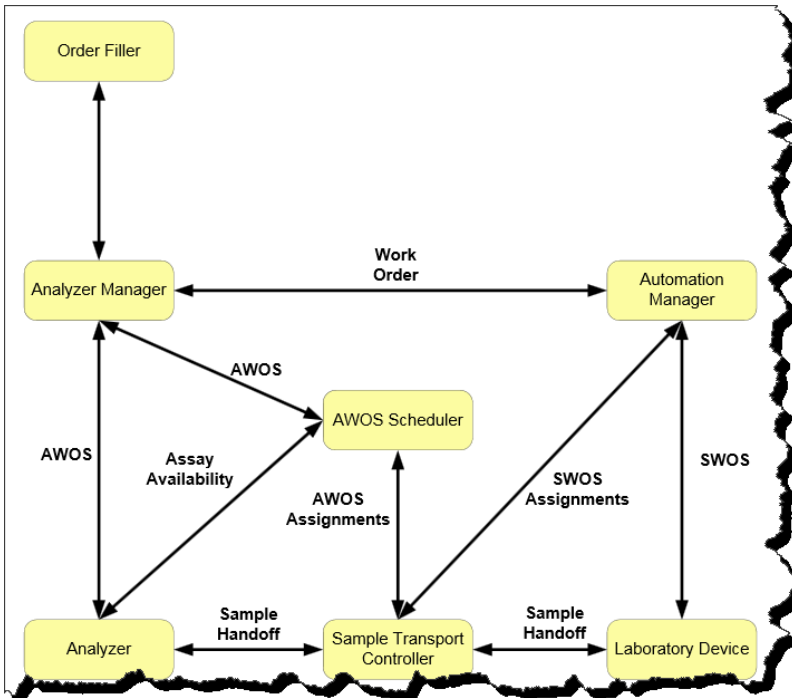
# communication

- Order Filler -> Automation Manager
- Automation Manager vs Analyzer -> AWOS Scheduler ?



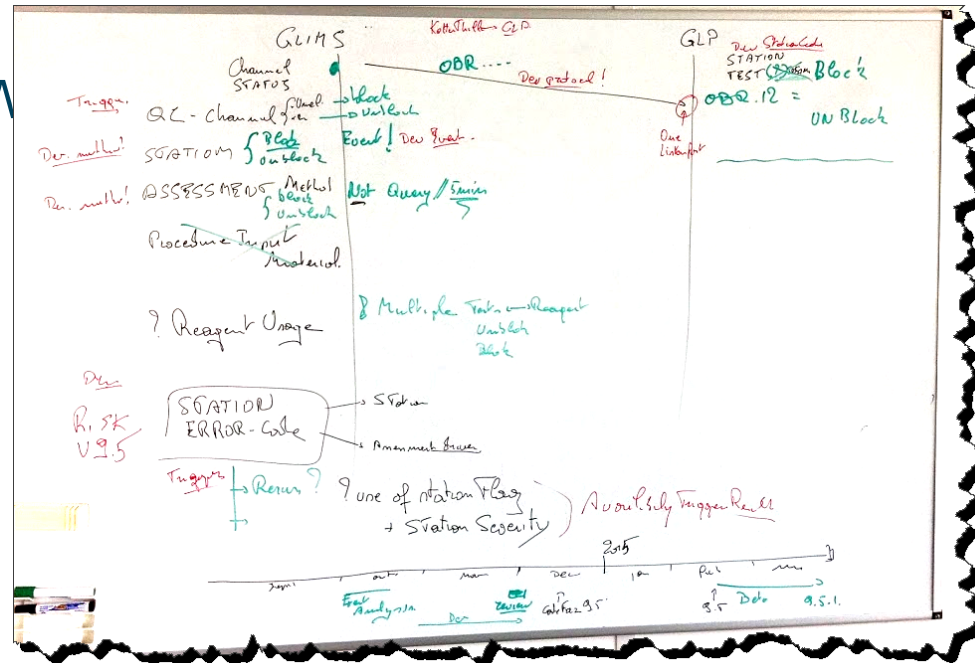
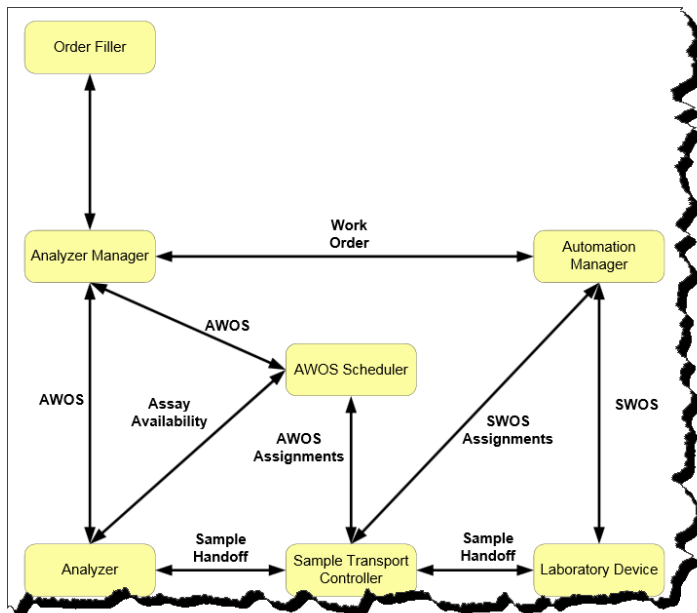
# LIMS Analyzer availability status

- Assay Availability / device (maintenance, ...)
- Add Analyser status BLOCK vs. UNBLOCK
- Forward these changes ?. AWOS Scheduler



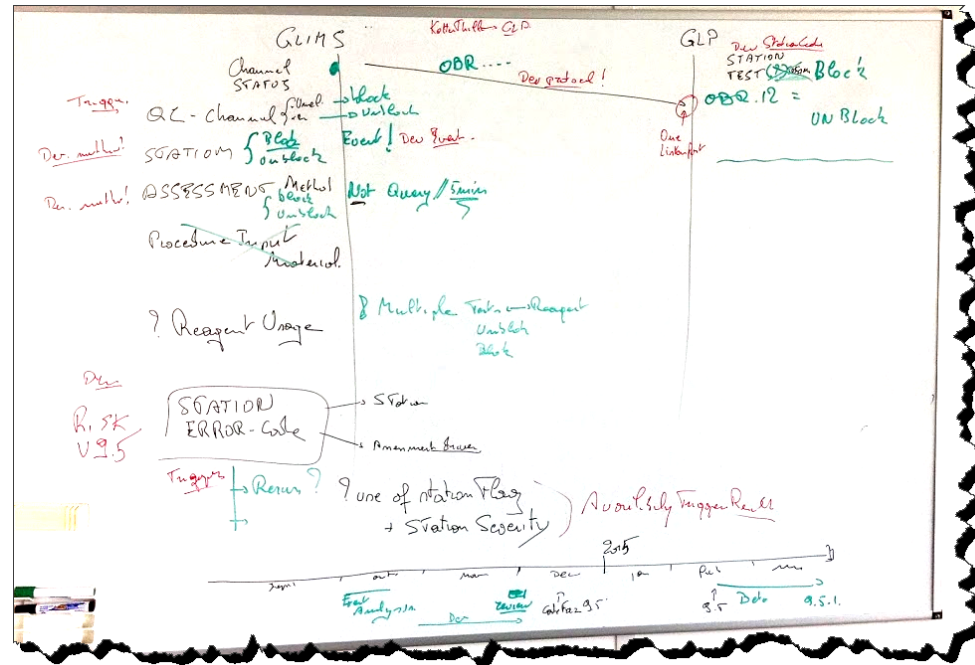
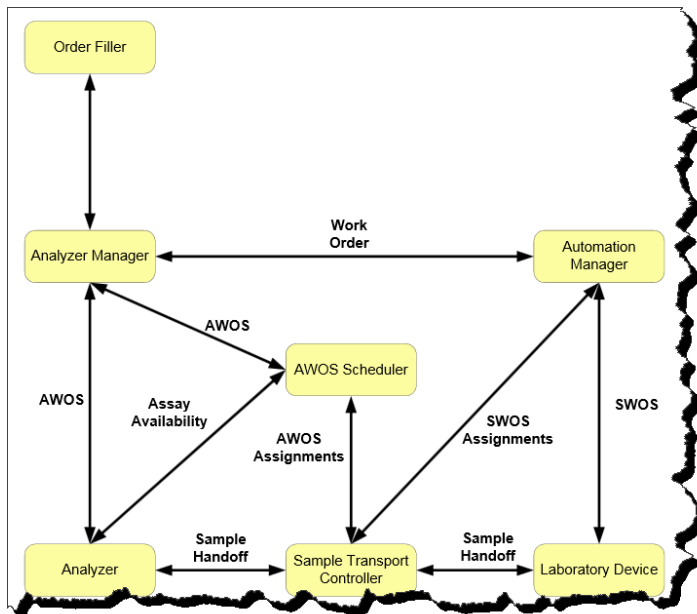
# LIMS Assessment availability

- Assay Availability per test / method
- Add Assessment status BLOCK vs. UNBLOCK
- Forward these changes ?. AW Scheduler



# LIMS QC-channel availability

- [Lower in priority] This could lead to Assessment block/unblock





# RISK : Station Error Codes

- Add a support to capture the Station Error Codes
- Apply triggers upon Error Codes from Analyzers
- Review Instrument transactions forwarding those

