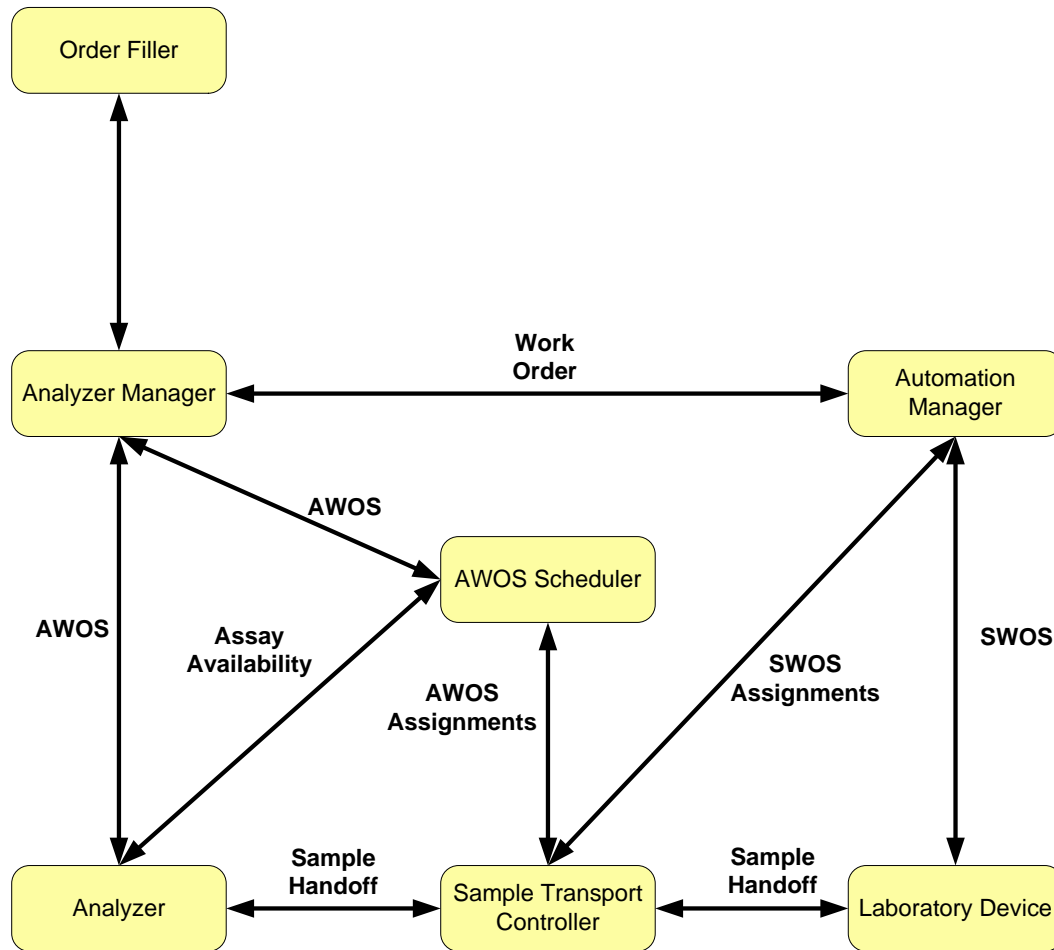


# IHE Laboratory LDA Project Discussion

F2F Meeting

May 12, 2014

# Total Lab Automation Actors



# Automation Actor Descriptions

- Order Filler – receives the laboratory work for each patient
  - Work Order
- Analyzer – instrument that automates IVD testing
- Analyzer Manager – manages analytical work for the instrument based on the Work Order
  - Analytical Work Order Step (AWOS)
- Laboratory Device – device that automates specimen (sample) preparation
- Automation Manager – manages specimen (automation) work for the laboratory devices based on the Work Order
  - Specimen Work Order Step (SWOS)

# Automation Actor Descriptions

- Assay (AWOS) Scheduler\* – schedules analytical work based on orders, instrument status, instrument capabilities, laboratory workflow, result status, etc (Assay Availability). Typically used with automation but could be used with stand-alone deployments.
- Sample Transport Controller\* – manages sample (specimen) container transport and handoff

\* Potential actors for new version of LDA

# Automation Data Flow Descriptions

- Work Order (LTW)
  - LAB-4 Work Order Management
  - LAB-5 Test Results Management
- AWOS (LAW)
  - LAB-27 Query for AWOS
  - LAB-28 Analytical Work Order Step Broadcast
  - LAB-29 AWOS Status Change
- SWOS (LDA)
  - LAB-21 Work Order Step Download to LD
  - LAB-22 WOS Query
  - LAB-26 SWOS Status Change
  - Review use of LAB-21 and LAB-22 for SWOS

# Automation Data Flow Descriptions

- Assay Availability
  - Ability to run an Assay
    - Tests available
    - Calibration Status
- AWOS Assignments
  - The Analyzers that need a Sample Container
- SWOS Assignments
  - The Laboratory Devices that need a Sample Container
- Sample Handoff
  - Coordination over the custody of the Sample Container

# Non-Observation AWOS Status Update Messages

- Updates prior to the observation
  - Test Initiated
  - Estimated Time-to-complete
- Use of OBX-11
  - Use coded value O: Order description only, no results
  - Use coded value I: Specimen in lab, results pending
- Alignment with ORC-5
  - SC: scheduled
  - IP: in progress
- ORC-27
  - Filler expected availability date/time