

IHE-Laboratory : Terminology

Filip Migom
Product Manager GLIMS

4 Feb. 2013

Terminology

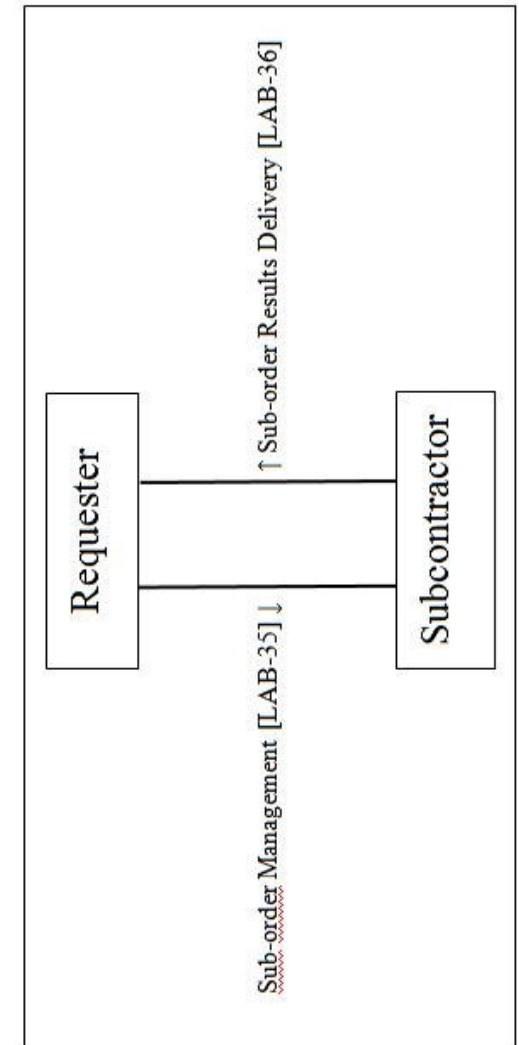
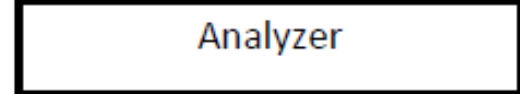
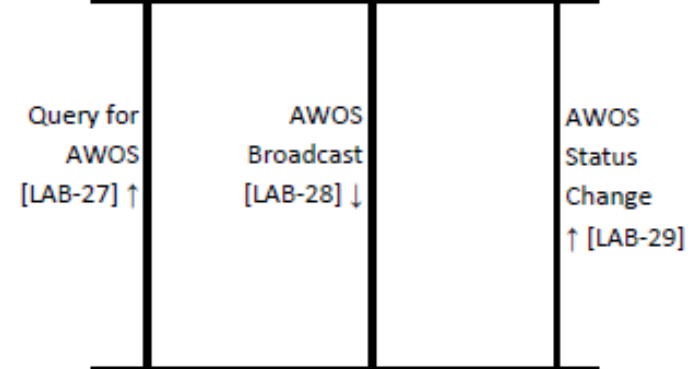
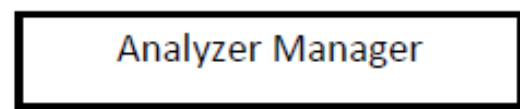
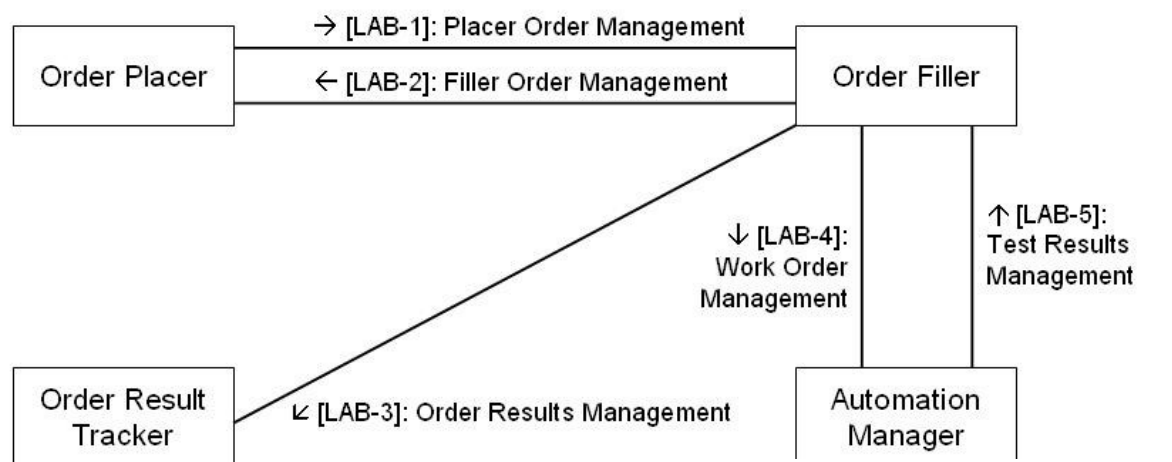
- Procedural Coding systems
 - LOINC
 - SNOMED-CT vs SNOMED 3.5
 - HL7 vocabularies
 - ICD-10
 - Belgium : Albert, Medidoc, Health-1, Medar, Euclides, ...
 - UCUM
 - ...

Terminology

○ Transactional dependencies.

- | | | |
|---------------|--------|---------------------|
| ○ Ordering | LAB-1 | (OP -> OF) |
| ○ Dispatching | LAB-4 | (OF -> AM) |
| ○ Analyzing | LAB-28 | (AM -> Analyzer) |
| ○ Reading | LAB-29 | (Analyzer -> AM) |
| ○ Confirming | LAB-5 | (AM -> OF) |
| ○ Reporting | LAB-3 | (OF -> ORT) |
| ○ Billing | | (OF -> ???) |

IHE-LTW + LDA/LAW + ILW ... LCSD



A case taken from IHE-Lab TF Rev. 4.0 Vol. 2a
Test on a Series of Specimens: Glucose Tolerance Study

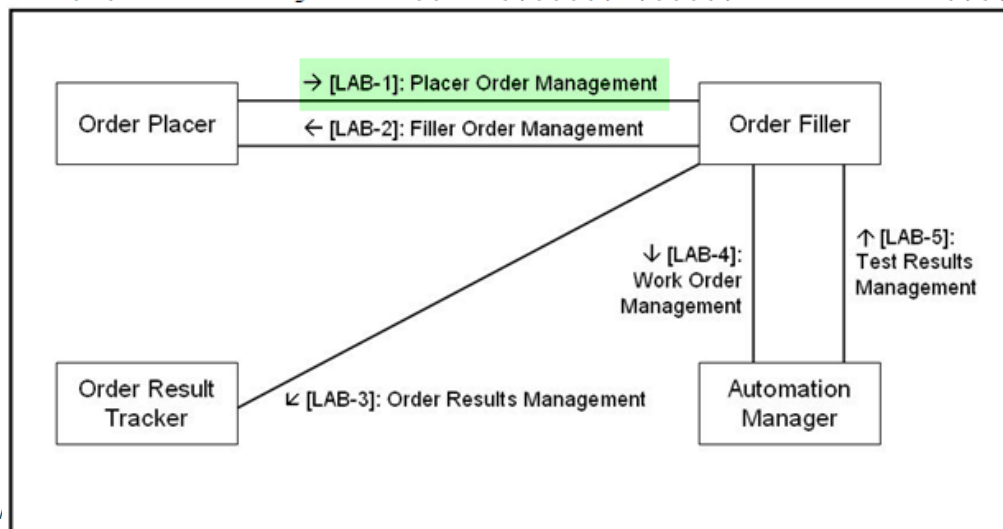
CASE-1

Test on a Series of Specimens: Glucose Tolerance Study

4.3.3.1 LAB-1 (OP → OF): Message “New order” with the first 3 Specimens

A new placer order sent to the Order Filler: Priority “ASAP” for this placer order. One observation provided by the placer. Three first specimens collected. The other specimens are pending.

```
MSH|^~\&|OP|Entero-gastric|OF|Chemistry|200309060820||OML^O21^OML_O21|
msgOP123|T|2.5|123| ||USA|EN
PID|1||12345^5^M10^Memphis_Hosp^PI||EVERYMAN^ADAM^^JR^^L|19800101|M
PV1|1|O|Ward|||||||12345
ORC|NW|12345678^gastric||666^gastric|||||200309060710|222221^NURSE^NANCY|||||||Ent
ero-gastric^^^^^FI^^EG02
TQ1|||||||A
OBR||12345678^gastric||82951^Glucose Tolerance Test^C4|||||1234^BLEEDER|
P|||||222222^PHYSICIAN^^^DR|821
OBX|1|NM|GLUCOSE||75|g||||F|||200309060735
SPM|1|123456781^gastric||SER|||||P|||||200309060735|||||||1
```



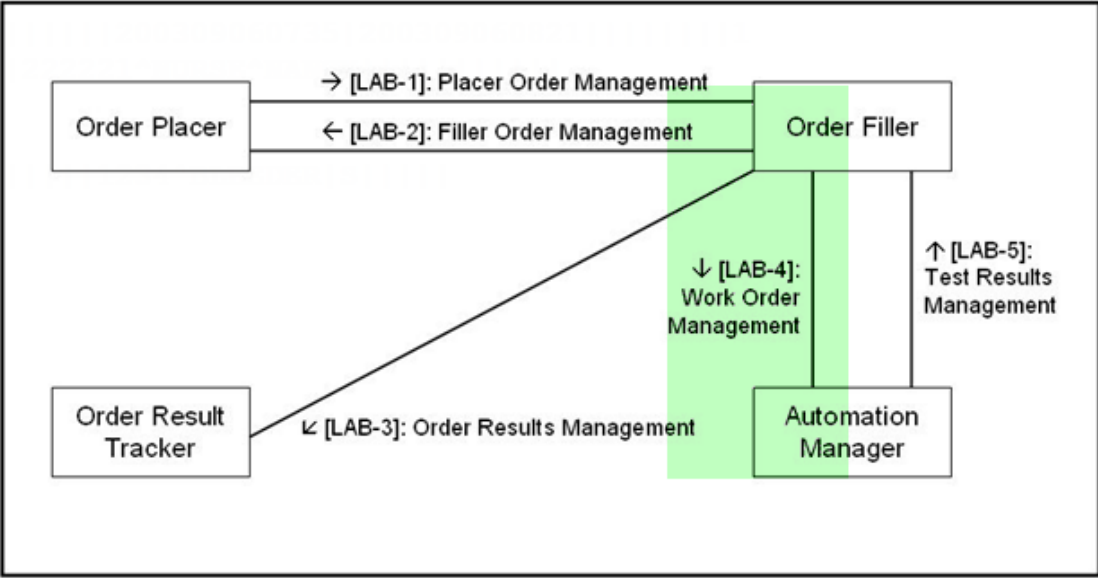
Test on a Series of Specimens: Glucose Tolerance Study

4.3.3.2 LAB-4 (OF → AM): Message “New order” with the first 2 Specimens

Two new work orders sent to the Automation Manager: Priority ASAP. One observation provided.

```
MSH|^~\&|OF|Chemistry|AM|Automation|200309060825||OML^O21^OML_O21|msgOF101|T|2.5|123||
||USA||EN
PID|1||12345^5^M10^Memphis_Hosp^PI||EVERYMAN^ADAM^^JR^^L|19800101|M
PV1|1|O|Ward|||||||12345
ORC|NW|||666^gastric|||||200309060824|22221^NURSE^NANCY|||||||
Entero-gastric^^^^^FI^^EG02
TQ1|||||||A
OBR||555_1^chemistry|GLUC^GLUCOSE^L|||||1234^BLEEDER|S|||||22222^PHYSICIAN^^^DR|82
1
SPM|1|123456781^gastric||SER|||||E
ORC|NW|||666^gastric|||||200309060710
Entero-gastric^^^^^FI^^EG02
TQ1|||||||A
OBR||555_2^chemistry|GLUC^GLUCOSE^L|
00000ADHYSTCIANAAAADD1001
```

82951
is now
GLUC



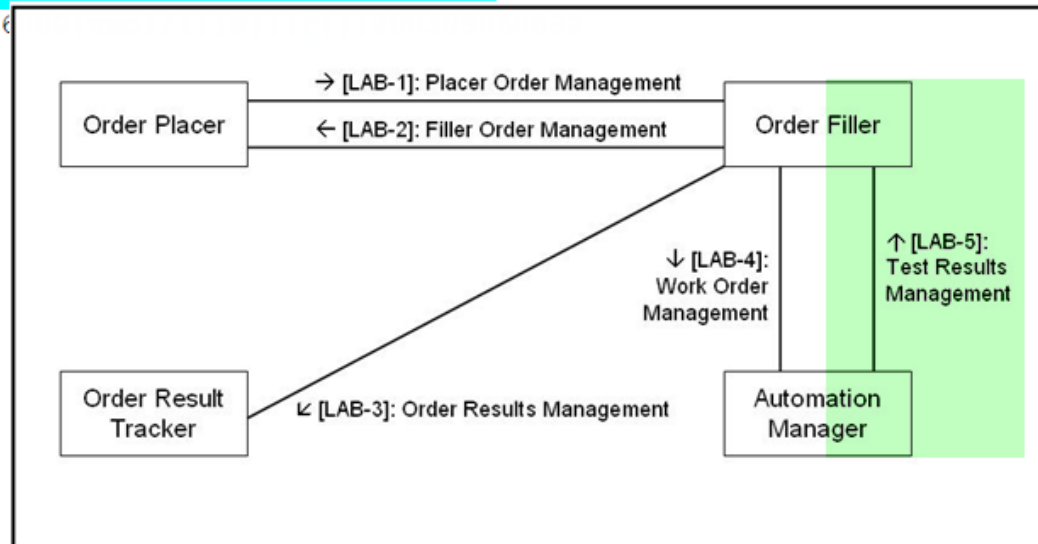
Test on a Series of Specimens: Glucose Tolerance Study

4.3.3.5 LAB-5 (AM →OF): Message “New results” for the first 2 Work Orders

The Automation Manager sends the two final results for the 2 work orders, technically validated by Suzy TECHNICIAN at 8h33:

```
MSH|^~\&|AM|Automation|OF|Chemistry|200309060833||OUL^R22^OUL_R22|msgAM1|T|2.5|123|||||
USA||EN
PID|1||12345^5^M10^Memphis_Hosp^PI||EVERYMAN^ADAM^^JR^^L|19800101|M
SPM|1|123456781^gastric||SER|||||P|||||200309060735|200309060821|||||||1
OBR||555_1^chemistry||GLUC^GLUCOSE^L||||1234^BLEEDER
|S||||22222^PHYSICIAN^^^DR|821||||200309060832|||F|||||
333333&TECHNICIAN&Suzy&&&&MEMPHIS_HOSPITAL^200309060833
OBX|1|NM|14749-6^GLUCOSE^LN||4200|umol/l||N|||F|||200309060830
SPM|2|123456782^gastric||SER|||||P|||||200309060755|200309060821|||||||1
OBR||555_2^chemistry||GLUC^GLUCOSE^L||||1234^BLEEDER
|S||||22222^PHYSICIAN^^^DR|821||||200309060832|||F|||||
333333&TECHNICIAN&Suzy&&&&MEMPHIS_HOSPITAL^200309060833
OBX|1|NM|14749-6^GLUCOSE^LN||6
```

82951 is now GLUC
Returning LOINC
14749-6



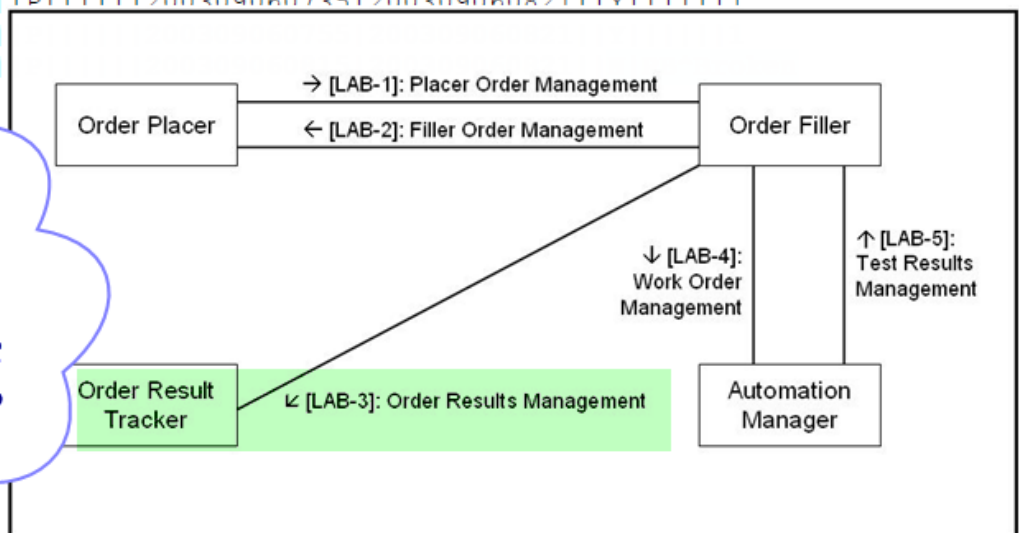
Test on a Series of Specimens: Glucose Tolerance Study

4.3.3.7 LAB-3 (OF → ORT): Message “Status Changed”

The two first results are sent, not clinically validated (i.e., not verified):

```
MSH|^~\&|OF|Chemistry|ORT||200309060825||ORU^R01^ORU_R01|msgOF105|T|2.5|123|||USA|EN
PID|1||12345^5^M10^Memphis_Hosp^PI||EVERYMAN^ADAM^^JR^^L|19800101|M
PV1|1|O|Ward|||||12345
ORC|SC|12345678^gastric||666^gastric|A|||200309060834|222221^NURSE^NANCY|
|||||Entero-gastric^^^^^FI^^EG02
OBR||12345678^gastric|^chemistry|82951^Glucose Tolerance
Test^C4|||||1234^BLEEDER|P|||||22222^PHYSICIAN^^^DR|821|||||R
TQ1|||||A
OBX|1|NM|GLUCOSE||75|g||||F|||200309060735
OBX|2|NM|14996-3^GLUCOSE PRE 75 G GLUCOSE PO^LN||4200|umol/l|4000-6100|N||
R|||200309060755
OBX|3|NM|30263-8^GLUCOSE 20M POST DOSE GLUCOSE^LN||6000|umol/l|<7800|N||
R|||200309060755
OBX|4|NM|30264-6^GLUCOSE 40M POST DOSE GLUCOSE^LN|||X
SPM|1|123456781^gastric||SER|||||P|||||200309060735|200309060821||Y|||||
SPM|2|123456782^gastric||SER|||||
SPM|3|123456783^gastric||SER|||||
containers|
```

82951 is now GLUC
Returning LOINC 14749-6
!!!
The result however will be LOINC
14996-3 or 30263-8 or 30264-6



A case taken from IHE-Lab TF Rev. 4.0 Vol. 2a
Two Hematology Batteries on a Blood Specimen

CASE-2

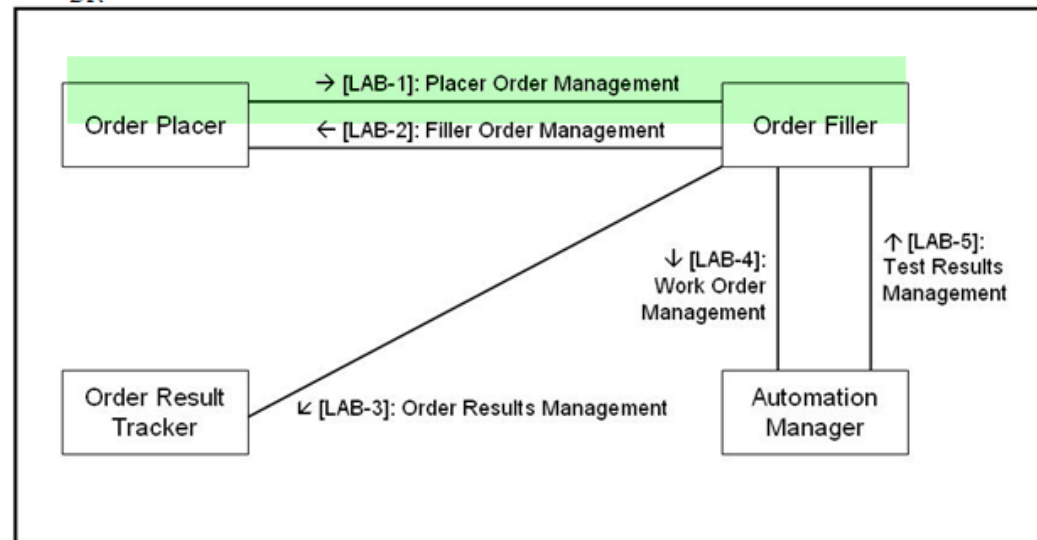
Two Hematology Batteries on a Blood Specimen

4.2.3.1 LAB-1 (OP → OF): Message “New order” with one Specimen

A new placer order sent to the Order Filler:

```
MSH|^~\&|OP|Urology|OF|Cytology|200310060820||OML^O33^OML_O33|001|T|2.5|||||USA||EN
PID|1||6543210^^^Abbeville Hospital^PI||ILL^JOHN^^^^^L||19810101|M
PV1|1|I||||||||||||||9998888
SPM|1||BLD|||||P|||||200310060735|||||||1
ORC|NW|9876543^Urology||555^Urology
||||200310060710|^NURSE^JANET|||||||Urology^^^^^FI^^^UR01
TQ1|1|||||||R
OBR|1|9876543^Urology||85027^Hemogram and platelet count, automated^C4|
||||^COLLECT^JOHN|||||^URO^^^^DR
ORC|NW|9876544^Urology||555^Urology
||||200310060710|^NURSE^JANET|||||||Urology^^^^^FI^^^UR01
TQ1|1|||||||R
OBR|1|9876544^Urology||85009^Differential WBC Count, buffy coat^C4|
||||^COLLECT^JOHN|||||^URO^^^^DR
```

2 Batteries : 85027,
85009



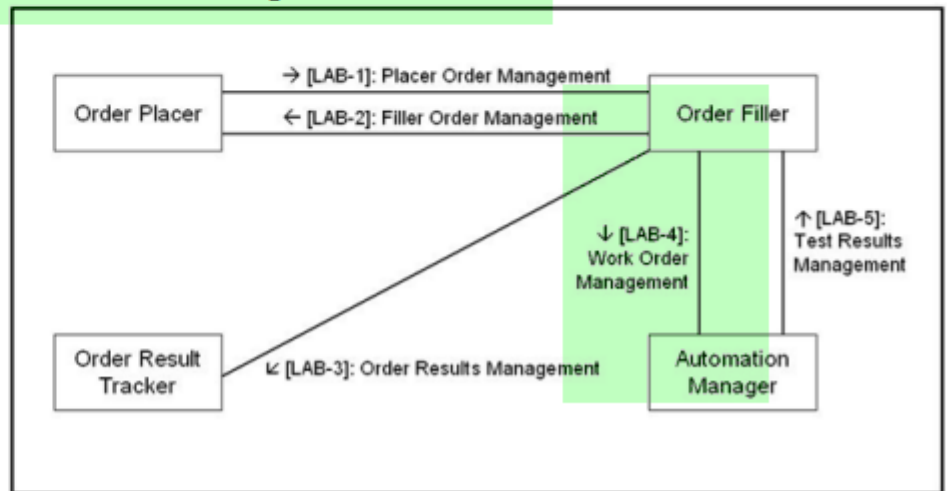
Two Hematology Batteries on a Blood Specimen

4.2.3.2 LAB-4 (OF → AM): Message “New order”

A new work order is sent to the Automation Manager:

```
MSH|^~\&|OF|Cytology|AM|Automation|200310060825||OML^O33^OML_O33|101|T|2.5|||USA|EN
PID|1||6543210^^^Abbeville Hospital^PI||ILL^JOHN^^^^L||19810101|M
PV1|1|I|||||9998888
SPM|1|456_1^Cytology||BLD||||P||||200310060735|200310060821||||1
ORC|NW||555^Urology||||200310060710|^NURSE^JANET||||Urology^^^^^FI^^^UR01
TQ1|1||||R
OBR|1|456^Cytology||85027^Hemogram and platelet count, automated^C4|
||||^COLLECT^JOHN||||^URO^^^^DR
ORC|NW||555^Urology||||200310060710|^NURSE^JANET||||Urology^^^^^FI^^^UR01
TQ1|1||||R
OBR|1|457^Cytology||85009^Differential WBC Count, buffy coat^C4|
||||^COLLECT^JOHN||||^URO^^^^DR
```

2 Batteries : 85027, 85009
We are happy to see the AM understands those batteries too.

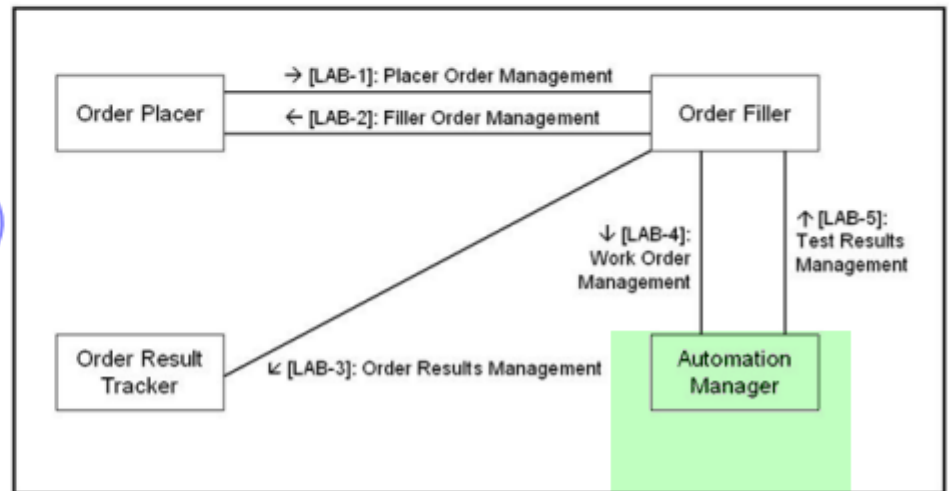


Two Hematology Batteries on a Blood Specimen

4.2.3.5 LAB-21 (AM→ Analyzer): New AWOS

```
MSH|^~\&|AM|Cytology|LD|Cytology|200506121348||OML^O33^OML_O33|001|T|2.5|||||USA||EI
PID|1||6543210^^^Abbeville Hospital^PI||ILL^JOHN^^^^^L||19810101|M
PV1|1|I||||||||||||||||9998888
SPM|1|456_1||BLD|||||P|||||200506121330|||||||1
ORC|NW|9876543^Urology|||||200506121315|66622^NURSE^JANET|||||||||Urology
TQ1|||||||R
OBR||9876543||85027^Hemogram and platelet count, automated^C4|||||||||14788^URO
ORC|NW|9876544^Urology|||||200506121315|66622^NURSE^JANET|||||||||Urology
TQ1|||||||R
OBR||9876544||85009^Differential WBC count, buffy coat^C4|||||||||14788^URO
```

2 Batteries : 85027, 85009
We are more happy to see the AM and Analyzer understands those batteries.



Two Hematology Batteries on a Blood Specimen

4.2.3.7 LAB-23 (Analyzer → AM): Tests Performed

```

MSH|^~\&|LD|Cytology|AM|Cytology|200506121410||OUL^R22^OUL_R22||102|T|2.5|||||USA||EN
PID|1||6543210^^^Abbeville Hospital^PI||ILL^JOHN^^^^^L||19810101|M
PV1|1|I|||||||||||||||||9998888
SPM|1|456_1||BLD
OBR||9876543||85027^Hemogram and platelet count, automated^C4|||||||||||||||||R
ORC|SC|9876543^Urology|||||200506121410
OBX|1|NM|11156-7^LEUKOCYTES^LN||8.2|10*3/mm3|||||R|||2005
OBX|2|NM|11273-0^ERYTHROCYTES^LN||4.08|10*3/mm3|||||R|||2005
OBX|3|NM|20509-6^HEMOGLOBIN^LN||13.4|10*3/mm3|||||R|||2005
OBX|4|NM|20570-8^HEMATOCRIT^LN||39.7|10*3/mm3|||||R|||2005
OBX|5|NM|30428-7^MVC^LN||97|10*3/mm3|||||R|||2005
OBX|6|NM|28539-5^MCH^LN||33.0|10*3/mm3|||||R|||2005
OBX|7|NM|28540-3^MCHC^LN||33.8|10*3/mm3|||||R|||2005
OBX|8|NM|11125-2^PLATELETS^LN||220|10*3/mm3|||||R|||2005
ORC|SC|9876544^Urology|||||200506121410
OBR||9876544||85009^Differential WBC count, buffy coat^C4|||||R
OBX|1|NM|23761-0^NEUTROPHILS/100 LEUKOCYTES^LN||72|%|||||R|||200506121410
OBX|2|NM|26450-7^EOSINOPHILS/100 LEUKOCYTES ^LN||2|%|||||R|||200506121410
OBX|3|NM|26478-8^LYMPHOCYTES/100 LEUKOCYTES ^LN||20|%|||||R|||200506121410
OBX|4|NM|26485-3^MONOCYTES/100 LEUKOCYTES ^LN||6|%|||||R|||200506121410
OBX|5|NM|30180-4^BASOPHILS/100 LEUKOCYTES ^LN||0|%|||||R|||200506121410
    
```

2 Batteries : 85027, 85009
 13 Results identified via LOINC
 → what about the BLD specimen ?
 → What about 10*3/mm3 units ?

Two Hematology Batteries on a Blood Specimen

4.2.3.8 LAB-5 (AM->OF): Message “New Results”

The Automation Manager sends the final results for the work order:

```
MSH|^~\&|AM|Automation|OF|Urology|200310060900||OUL^R22^OUL_R22|308|T|2.5|||||USA||EN
PID|1||6543210^^^Abbeville Hospital^PI||ILL^JOHN^^^^L||19810101|M
PV1|1|I|||||9998888
SPM|1|456 1^Cytology|BLD|||||P|||||200310060735|200310060821||Y|||||1
OBR|1|456^Cytology||85027^Hemogram and platelet count, automated^C4|
||||^COLLECT^JOHN|P||||^URO^^^^DR|
|||||200310060832||F|||||&TECHOS&MARC^200310060833
ORC|SC||||CM||||200310060710|^NURSE^JANET|||||Urol
OBX|1|NM|11156-7^LEUKOCYTES^LN||8.2|10*3/mm3|4-10|N||F|||200310060830
OBX|2|NM|11273-0^ERYTHROCYTES^LN||4.08|10*6/mm3|1|N||F|||200310060830
OBX|3|NM|20509-6^HEMOGLOBIN^LN||13.4|g/dL|11.5-14|N||F|||200310060830
OBX|4|NM|20570-8^HEMATOCRIT^LN||39.7|%|37-47|N||F|||200310060830
OBX|5|NM|30428-7^MCV^LN||97|fL|80-95|N||F|||200310060830
OBX|6|NM|28539-5^MCH^LN||33.0|pg|27-32|N||F|||200310060830
OBX|7|NM|28540-3^MCHC^LN||33.8|%|30-36|N||F|||200310060830
OBX|8|NM|11125-2^PLATELETS^LN||220|10*9/L|150-400|N||F|||200310060830
OBR|2|457^Cytology||85009^Differential WBC Count, buffy coat^
||||^COLLECT^JOHN|P||||^URO^^^^DR|
|||||200310060832||F|||||&TECHOS&MARC^200310060833
ORC|SC||||CM||||200310060710|^NURSE^JANET|||||Urology^^^^^FI^^UR01
OBX|1|NM|23761-0^NEUTROPHILS/100 LEUKOCYTES^LN||72|%|N||F|||200310060830
OBX|2|NM|26450-7^EOSINOPHILS/100 LEUKOCYTES^LN||2|%|N||F|||200310060830
OBX|3|NM|26478-8^LYMPHOCYTES/100 LEUKOCYTES^LN||20|%|N||F|||200310060830
OBX|4|NM|26485-3^MONOCYTES/100 LEUKOCYTES^LN||6|%|N||F|||200310060830
OBX|5|NM|30180-4^BASOPHILS/100 LEUKOCYTES^LN||0|%|N||F|||200310060830
```

2 Batteries : 85027, 85009
13 Results identified via LOINC
AM is not making changes.

Two Hematology Batteries on a Blood Specimen

4.2.3.10 LAB-3 (OF->ORT): Message "Status Changed"

The clinical expert has performed the clinical validation at 09h29. The order is completed.

The results are final:

```

MSH|^~\&|OF|Cytology|ORT|
PID|1||6543210^^^A
PV1|1|I|||||
SPM|1|456^1^Cytolo
OBR|1|9876543^Uro
||||^COLLECT^JOHN
||||200310060929
ORC|SC|9876543^Uro
Urology^^^^^^FI^^
TQ1|1|||||R
OBX|1|NM|11156-7^LEUKOCYTES^LN||8.2|10*3/mm3|4-10|N||F||200310060830
OBX|2|NM|11273-0^ERYTHROCYTES^LN||4.08|10*6/mm3|10-12|N||F||200310060830
OBX|3|NM|20509-6^HEMOGLOBIN^LN||13.4|g/dL|11.5-14.5|N||F||200310060830
OBX|4|NM|20570-8^HEMATOCRIT^LN||39.7|%|37-47|N||F||200310060830
OBX|5|NM|30428-7^MCV^LN||97|fL|80-95|N||F||200310060830
OBX|6|NM|28539-5^MCH^LN||33.0|pg|27-32|N||F||200310060830
OBX|7|NM|28540-3^MCHC^LN||33.8|g/dL|30-36|N||F||200310060830
OBX|8|NM|11125-2^PLATELETS^LN||220|10*9/L|150-400|N||F||200310060830
OBR|2|9876544^Urology|457^Cytology|85009^Differential WBC Count, buffy coat^C4|
||||^COLLECT^JOHN|P||||^URO^^^^DR|
||||200310060929||F|||||&CYTO&JANE^200310060929
ORC|SC|9876544^Urology||555^Urology|CM||||200310060710|^NURSE^JANET|||||
Urology^^^^^^FI^^UR01
TQ1|1|||||R
OBX|1|NM|23761-0^NEUTROPHILS/100 LEUKOCYTES^LN||72|%|N||F||200310060830
OBX|2|NM|26450-7^EOSINOPHILS/100 LEUKOCYTES^LN||2|%|N||F||200310060830
OBX|3|NM|26478-8^LYMPHOCYTES/100 LEUKOCYTES^LN||20|%|N||F||200310060830
OBX|4|NM|26485-3^MONOCYTES/100 LEUKOCYTES^LN||6|%|N||F||200310060830
OBX|5|NM|30180-4^BASOPHILS/100 LEUKOCYTES^LN||0|%|N||F||200310060830
  
```

Neutrophils : 72,00/100 * 8.2 10³/mm³
=> 5,904 10³/mm³

2 Batteries : 85027, 85009

13 Results identified via LOINC

The OF could have completed this case with absolute values for the diff.

+ 5 extra LOINC ?

and what about the ordering battery ?

IHE Laboratory.

Do we have to plan something with
LOINC ? SNOMED ? ..

