

IHE Europe Deployment Committee Activity Report

Date Activity Report Issued: November 30th 2015

Mission of IHE Europe

The mission of IHE-Europe is to engage clinicians, health authorities, industry, and users to improve healthcare interoperability in Europe by

- helping national and European stakeholders and policy-makers in adopting, promoting and implementing IHE specifications
- developing tools and services in support of interoperability testing

Toward that end, IHE-Europe conducts education, testing, demonstrations and other activities promoting the deployment within Europe of systems compliant with the IHE Technical Frameworks developed by IHE International. IHE-Europe also recruits users and developers to participate in the development of these specifications and promote their appropriate use in Europe. IHE-Europe interacts with relevant governmental and non-governmental organizations in Europe. It also maintains close contacts with similar initiatives around the world. IHE-Europe has developed, through IHE-Services, a professional testing team in order to support its Members and beneficiaries that want to deploy IHE profiles in their solutions and projects.

Sponsors of IHE Europe

IHE Europe has four sponsoring organizations:

ESR

Founded in 2005, The European Society of Radiology (ESR) is an apolitical, non-profit organisation, exclusively and directly dedicated to promoting and coordinating the scientific, philanthropic, intellectual and professional activities of radiology in all European countries. ESR's mission at all times is to serve the health care needs of the general public through the support of science, teaching and research and the quality of service in the field of radiology. With more than 62,000 individual members across the globe as well as 59 institutional members, it has grown to become the largest radiological society in the world and hosts one of the biggest and most innovative scientific meetings in Europe, the European Congress of Radiology (ECR), in Vienna each year. www.myesr.org

Key role: ESR provides the Secretariat of IHE-Europe in their offices in Vienna and coordination support of the General Assembly and all Committees of IHE-Europe.

COCIR

COCIR is the European Coordination Committee of the Radiological, Electromedical and Healthcare IT Industry.

A non-profit trade association created in 1959, COCIR encourages the use of advanced technology to support healthcare delivery worldwide. COCIR's key objectives include promoting worldwide trade of medical devices and maintaining the competitiveness of the European health sector. www.cocir.org

Key role: COCIR is a long-time supporter of IHE in Europe with which IHE Europe strategically cooperates, especially at EC level.

INRIA

INRIA is the French National Institute for Research in Computer Science

A French national research institution focusing both theoretical and applied research for computer science, control theory and applied mathematics. www.inria.fr

Key role: INRIA dedicated a team in their offices in Rennes, France including the IHE-Europe technical manager to work on the development of testing tools, testing events, demonstrations and education in Europe.

Kereval

KEREVAL is a testing laboratory company which proposes test strategy consulting, CFTL and REQB testing methods and techniques and any other testing activities (test regression, performance testing, stress testing, interoperability testing, ...).

www.kereval.com

Key role: Kereval dedicated a team in their offices in Rennes, France and hosts the IHE-Europe team actively working on the development of testing tools, testing events, demonstrations and education in Europe.

IHE International Board Representative

Name of Representative: Lapo Bertini

Email: lapo.bertini@ihe-europe.net

Term ends: No preset end

IHE Europe Secretariat

Name: Ulrike Mayerhofer-Sebera

Phone: +43-1-533-4064-530

Email: ulrike.mayerhofer-sebera@ihe-europe.net

Date first recognized by IHE International Board

IHE-Europe was created in 2001 and incorporated as a not-for-profit association in 2008, before the creation of IHE-International and was one of the founding members of IHE-International.

Organization of IHE-Europe

IHE-Europe Chairs

User Co-Chair: Peter Mildenberger, ESR

Vendor Co-Chair: Lapo Bertini, Dedalus/IHE Italy

IHE-Europe Deputy Chairs

User Deputy Co-Chair: Jacqueline Surugue, EAHP

Vendor Deputy Co-Chair: Bernie Van Welt, Forcare

Executive Committee

Peter Mildenberger, ESR

Lapo Bertini, Dedalus/IHE Italy (also Financial Officer)

Jacqueline Surugue, EAHP

Bernie Van Welt, Forcare

Geert Claeys, Agfa Healthcare

Charles Parisot GE Healthcare

MarCom Committee

Interim Chair: Peter Mildenberger, ESR

Interim Chair: Lapo Bertini, Dedalus/IHE Italy

IHE-Services Committee

Chair: Charles Parisot GE Healthcare

EU Affairs Committee

Chair: Charles Parisot GE Healthcare

IHE-Europe Director of Interoperability

Karima Bourquard

IHE-Services Director

Alexander Berler

IHE-Europe Technical Manager

Eric Poiseau

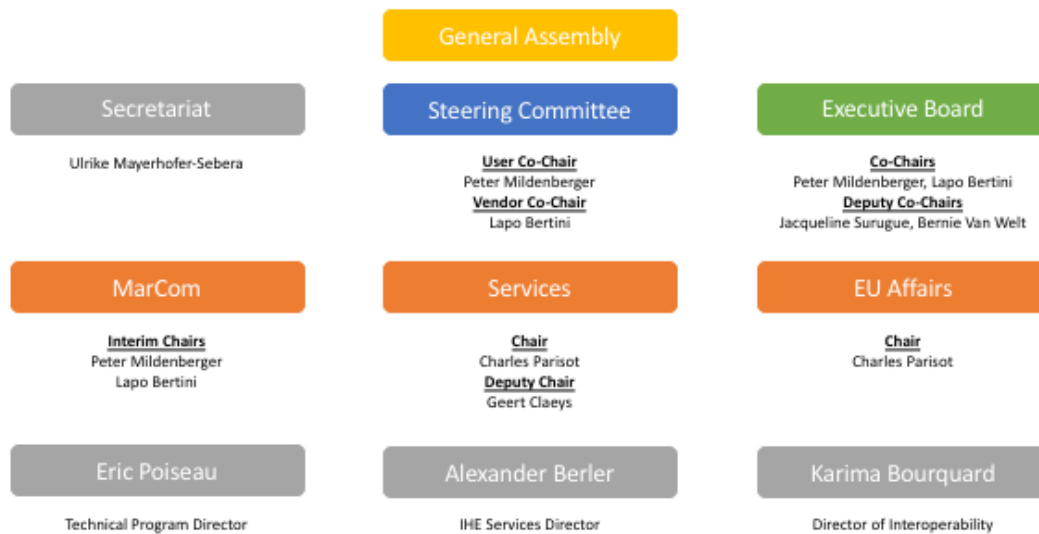
IHE-Europe Secretariat

IHE-Europe coordinator: Ulrike Mayerhofer-Sebera

Governance

IHE-Europe is a not-for-profit association (aisbl) established under the laws of the Kingdom of Belgium which operates according to its Statutes and Internal Rules. The association is governed by a Steering Committee composed of all the active members. IHE-Europe Steering Committee usually convenes every month via teleconference and twice a year face-to-face. The Executive Committee (Board) handles day-to-day operational executive tasks and is composed of the two Co-Chairs, the two past/deputy Co-Chairs and the chairs of the IHE-Services and European Affairs Committees. The active members of IHE-Europe are all members that pay their annual membership fee, while associate members are those members that do not pay membership fees and therefore do not have voting rights. No associate members are present at this time. The General Assembly is composed of all members (active and associate) of the association and meets twice a year face-to-face. The Co-Chairs are elected for a 2-year mandate, renewable once. IHE-Europe has selected Acompagnie (Belgium) and Corti&Associati (Italy) respectively as accounting and financial management. The various Committees of IHE-Europe are coordinated by and report to the Steering Committee. The Secretariat is based in Vienna and provides daily administrative and coordination support to all Committees.

Structure





Support and Interest by Stakeholder Groups

Users' Associations

Entscheiderfabrik (GUIG) www.guig.org

European Association of Hospital Managers (EAHM) www.eahm.eu.org

European Association of Hospital Pharmacists (EAHP) www.eahp.eu

European Society of Radiology (ESR) www.myesr.org

Société Française de Radiologie (SFR) www.sfrnet.org

Companies

Agfa Healthcare www.agfa.com

Arsenàl.IT www.consortzioarsenal.it

A-Thon www.a-thon.it

Etiam www.etiam.com

Forcare www.forcare.nl

Gnomon www.gnomon.com.gr

Kereval www.kereval.com/

GE Healthcare www.gehealthcare.com

Philips Healthcare www.medical.philips.com

Rogan-Delft www.rogan-delft.com

Siemens Healthcare www.siemens.com/healthcare

Visus www.visus.com

National Deployment Committees

IHE-Austria www.ihe-austria.at

IHE-Belgium

IHE-France www.interopsante.org

IHE-Germany www.ihe-d.de

IHE-Italy www.ihe-italy.org

IHE-Luxembourg

IHE-Netherlands www.ihe-nl.org

IHE-Spain www.ihe-e.org

IHE Suisse www.ihe-suisse.ch

IHE-Turkey www.ihetr.org

IHE-United Kingdom www.ihe-uk.net

Activities and Achievements in the Preceding 24 Months**EU recognition of 27 IHE Integration Profiles**

In July 2015 the European Commission announced that 27 IHE Profiles are eligible for referencing in public procurements as technical specifications. This is following extensive consultation and evaluation of the European Multi Stakeholder Platform on ICT Standardisation and sectoral experts. The European Commission stated that the 27 IHE Profiles have the potential to increase interoperability of eHealth services and applications to the benefit of patients and the medical community leading to their recognition in referencing in public procurement throughout the European Union. These profiles are:

1. IHE XCPD: Cross-Community Patient Discovery;
2. IHE XCA: Cross-Community Access;
3. IHE XCF: Cross-Community Fetch;
4. IHE XDR: Cross-Enterprise Document Reliable Interchange;
5. IHE CT: Consistent Time;
6. IHE ATNA: Audit Trail and Node Authentication;
7. IHE BPPC: Basic Patient Privacy Consents;
8. IHE XUA: Cross-Enterprise User Assertion;
9. IHE PRE: Pharmacy Prescription;
10. IHE DIS: Pharmacy Dispense;
11. IHE XPHR: Exchange of Personal Health Record Content;
12. IHE XD-MS: Cross-Enterprise Sharing of Medical Summaries Integration Profile;
13. IHE XD-SD: Cross-Enterprise Sharing of Scanned Documents;
14. IHE PIX: Patient Identifier Cross-Referencing;
15. IHE PDQ: Patient Demographics Query;
16. IHE XDS.b: Cross-Enterprise Document Sharing;
17. IHE XDS-I.b: Cross-Enterprise Document Sharing for Imaging;
18. IHE XD-LAB: Laboratory Reports;
19. IHE XDM: Cross-Enterprise Document Media Interchange;
20. IHE SVS: Sharing Value Sets;
21. IHE SWF: Radiology Scheduled Workflow;
22. IHE SWF.b: Radiology Scheduled Workflow;
23. IHE PIR: Patient Information Reconciliation;
24. IHE PAM: Patient Administration Management;
25. IHE LTW: Laboratory Testing Workflow;
26. IHE LCS: Laboratory Code Sets Distribution;
27. IHE LAW: Laboratory Analytical Workflow.

Details of the announcement in the Official Journal of the European Union can be found [here](#).

Marketing and Communication (MarCom)

IHE-Europe MarCom Committee is tasked to provide marketing and communication support to IHE-Europe. This plays a vital role as communication is essential to IHE-Europe's mission to disseminate. The MarCom Committee provides support to Connectathon marketing efforts, IHE Symposium, News Pulse (archive located [here](#)), IHE-Europe website, IHE-Europe social networking channels, in addition to a variety of publication such as event and program flyers, the Connectathon Whitepaper, etc.

Connectathon Whitepaper

In the effort of providing a comprehensive overview of the Connectathon to a greater audience, IHE-Europe MarCom has published since 2013 a "Connectathon White Paper". The 2015 edition includes an

in-depth journey into this amazing event, including quotes from luminaries, benefits, organization, challenges, and other important information. The white paper is available [here](#).

IHE-Services

This committee has the mission to promote the deployment of IHE profiles within our Members base and others beneficiaries such as national/regional programs in Europe by offering services. IHE-Services organizes interoperability test sessions and develops interoperability test tools, leveraging more than 10 years of experience in these domains. This committee is open to Members of IHE-Europe with an additional fee. IHE-Services Director is Mr. Alexander Berler.

IHE-Services offers the following services to IHE-Europe Members: projectathons, Gazelle test-bed and tools, training, virtual Connectathons, bespoke interoperability specification definition, bespoke test tools and test plans, interoperability showcases and Conformity Assessment (under IHE International). A fundamental operation engagement of IHE-Services is the support provided to IHE Connectathons (USA, Europe, Japan and China). IHE-Services' Connectathon support is a long-time commitment and integral part of the team activities.

EU-Affairs Committee

EU-Affairs is a Committee of IHE-Europe with the mission to follow, understand, promote, influence the EU eHealth agenda. This committee is open to Members of IHE-Europe and is coordinate by IHE Director of Interoperability is Ms. Karima Bourquard. Coordinated by the EU-Affairs Committee, IHE-Europe membership has engaged in a number of EU-Commission sponsored projects directly related to ehealth and interoperability. These projects are the means to shape the interoperability agenda across Europe, expose a broader audience to IHE Profiles and testing support, as well as provide input for the evolution and creation of new profiles. These projects are:

epSOS

Duration: 2008-2014

epSOS has the aim to provide concrete cross border services that ensure safe, secure and efficient medical treatment for citizens when travelling across Europe. The focused services are:

- Patient Summary for EU citizens
- ePrescription for EU Citizens including medication ePrescription and medication eDispensation
- build on existing National eHealth projects and use experiences and knowledge from all Member States

The role of IHE is two-fold:

- Coordination of the Industry Team who contributes to the specifications of the project
- Testing by leading all the testing sessions and development of the test tools for the project

epSOS has had a series of Projectathon since 2011 (Pisa). The last epSOS projectathon was held in 2014 during the Connectathon in Vienna (Austria) in April 2014 and the next one will be held in December 2015

in Lisbon (under EXPAND). These projectathons offers to the various countries the means to test their implementation of national contact points for health information exchange across borders.

EXPAND

Duration: 2014-2015

EXPAND goal is to maintain and further develop interoperability assets which have a European scope and to integrate the relevant recommendations and policy decisions taken by the eHN (voluntary coordination among the National Ministries of Health). In doing so, EXPAND brings together a wide range of relevant stakeholders with expertise in the development, implementation, assessment, maintenance, dissemination and use of an EU-wide infrastructure. In the project context, IHE-Europe is leading two maintenance shops: (1) epSOS specifications and (2) testing. It organises the projectathon including features from general IT project such as eSens and Storke (eID) projects.

Antilope

Duration: 2013-2015

Antilope is a Thematic Network whose the objective is to develop documentation and educational materials for the promotion, the dissemination, adoption, take up and testing of existing and recognized profiles and standards selected as part of the eHealth European Interoperability Framework (eEIF). The project has refined eEIF from which the 27 profiles were adopted by the EU Commission for procurement. Another aspect of Antilope was the work around the quality management system for interoperability, the quality label and certification process; that was a good foundation for the definition of the IHE international CAS in 2014.

eStandards

Duration: 2015-2017

eStandards project is about delivering an evidence-based roadmap for alignment, iterative consolidation and brand acceptance of EU standards that is endorsed by SDOs, the EHN, the providers and the Industry. Other aspects of eStandards are the contribution to the eEIF, participation to the EU/US roadmap actions, and the exploration of socio-economic peculiarities in eHealth Interoperability.

Trillum Bridge

Duration: 2014-2015

Extension of the epSOS project: exchanging Patient Summaries for a patient travelling from US to Europe (one of the European countries) or from Europe to US. The focused services are:

- Patient Summary for EU/US citizens (alignment of PS and CCD)
- build on the existing European NCP (project epSOS) in Europe and Health Information Exchange in US (ehealth Exchange)

The role of IHE:

- Lead the testing strategy and testing session and development of the test tools for the project
- Contribution to the technical architecture and the mapping of IHE profiles across the Atlantic

IHE Symposiums

In 2014 IHE-Europe created a format for small event add-on called IHE Symposium. The format has three sections and usually is half-day so that it can be easily attached to larger congress and forums. The first IHE Symposium was held in May 2014 together with the eHealth Summit in Athens (Greece). The 2015 edition was held with Med-e-Tel in Luxembourg alongside the European Connectathon in April 2015 (see related News Pulse [here](#) and [here](#)). The next one will be in Bochum (Germany) in April 2016, during the Connectathon week.

Leading role / efforts in Domain Committees

Several Europeans (either from IHE-Europe or European IHE National Deployment Committees) are contributing actively on the development of profiles in the following Domain Committees.

Domain	Chairs
Anatomic Pathology Technical Committee	Jacques Klossa Marcial Garcia Rojo
ITI Technical Committee	Mauro Zanardini
Laboratory Planning Committee	François Macary
Laboratory Technical Committee	François Macary
Pharmacy Planning Committee	Jürgen Brandsstatter
Pharmacy Planning Committee	Leonidas Tzimis
Pharmacy Technical Committee	Jose Costa Teixeira
Pharmacy Technical Committee	Michael Tan
Surgery Planning Committee	Klaus-Martin Irion
Surgery Technical Committee	Joerg-Uwe Meyer

The above Domain Committees are co-sponsored by the following European user associations: CARS, EAHP, NICTIZ, ADICAP, SEAP, SEIS, SFP, ASIP Santé.

Notable Challenges

Success of IHE-Services

IHE-Services has made reasonable progress in its internal organization but its main challenge is reaching a critical mass of activity to ensure long-term sustainability. IHE-services proposes services on the interoperability ehealth arena based on IHE profiles and the recognition of the 27 IHE profiles from the EU, will drive the need of testing tools and training.

IHE International Membership fee

The introduction of membership fees from IHE International may require time to be understood by the National Deployment Committees members of IHE-Europe. The need for a dual membership of their

national members (both IHE national and IHE international) needs further development and communication.

Conformity Assessment efforts

IHE-Europe contributes to the global effort on the definition and progress of the IHE International Conformity Assessment program, as IHE-Europe sees a significant benefit in having products being tested only once and deployed in many places around the world. By co-chairing the Committee, IHE-Europe brings its own experience and competence in the domain (Lapo Bertini is the co-chair of the Committee and IHE-Europe is also providing Secretariat support).

Planned Activities

- IHE-Europe Connectathon 2016 in Bochum, Germany
- IHE-Europe Connectathon 2017 in Venice, Italy
- IHE International World Summit 2016 in Amsterdam, The Netherlands
- Expansion of Conformity Assessment program